



**Grand Trunk Railway
(GTR) Shops**

UPDATE:

How to Insulate and Reface to
Reflect the Original Facade



UPDATE: HOW TO INSULATE AND REFACE TO REFLECT THE ORIGINAL FACADE

RR





Construction Products Group

- **Why Are We Here**
- **Who We Are**
- **What We Specialize In**
- **How We Can Help**
- **Our Warranty & Accountability**



An aerial photograph of a modern, multi-story commercial building with a glass facade and a large, paved parking lot. The building is surrounded by greenery, including trees and grass. The parking lot is filled with cars, and there are several loading docks visible. The overall scene is a well-maintained urban or suburban development.

How do you protect your investment and legacy?

This property is a major investment, with a big community impact!

It's building envelope is critical to protecting it.

You get one chance to get it right... or spend many years and a lot of money trying to fix it.

Quick History of Tremco

- Founded in 1928 as Tremco Manufacturing Company by William Treuhaft
- By 1972 Tremco had opened its first Canadian manufacturing plant in Toronto on Wicksteed Ave which still operates to this day
- Continuing to support Canadian families with over 2000 employees in Canada
- Tremco has been designing high performance construction materials for **98 years!**



TREMCO ANNUAL PICNIC
RICHMOND COUNTRY CLUB
JULY 23, 1947

Our Specialty?

Tremco specializes in *helping buildings last for generations.*

We focus on *designing and integrating complete building envelope systems* that protect all 6 sides of a structure from water, air, and energy loss *while respecting architectural and historic design.*

Our role on projects like this is to *help safeguard the community's investment* by reducing long-term maintenance costs and ensuring the building performs reliably over time.



Where Tremco Protects

Roofing Systems

Cladding Systems

Air & Vapour Barriers

Sealants

Glazing Systems

Waterproofing Systems

Traffic Coatings



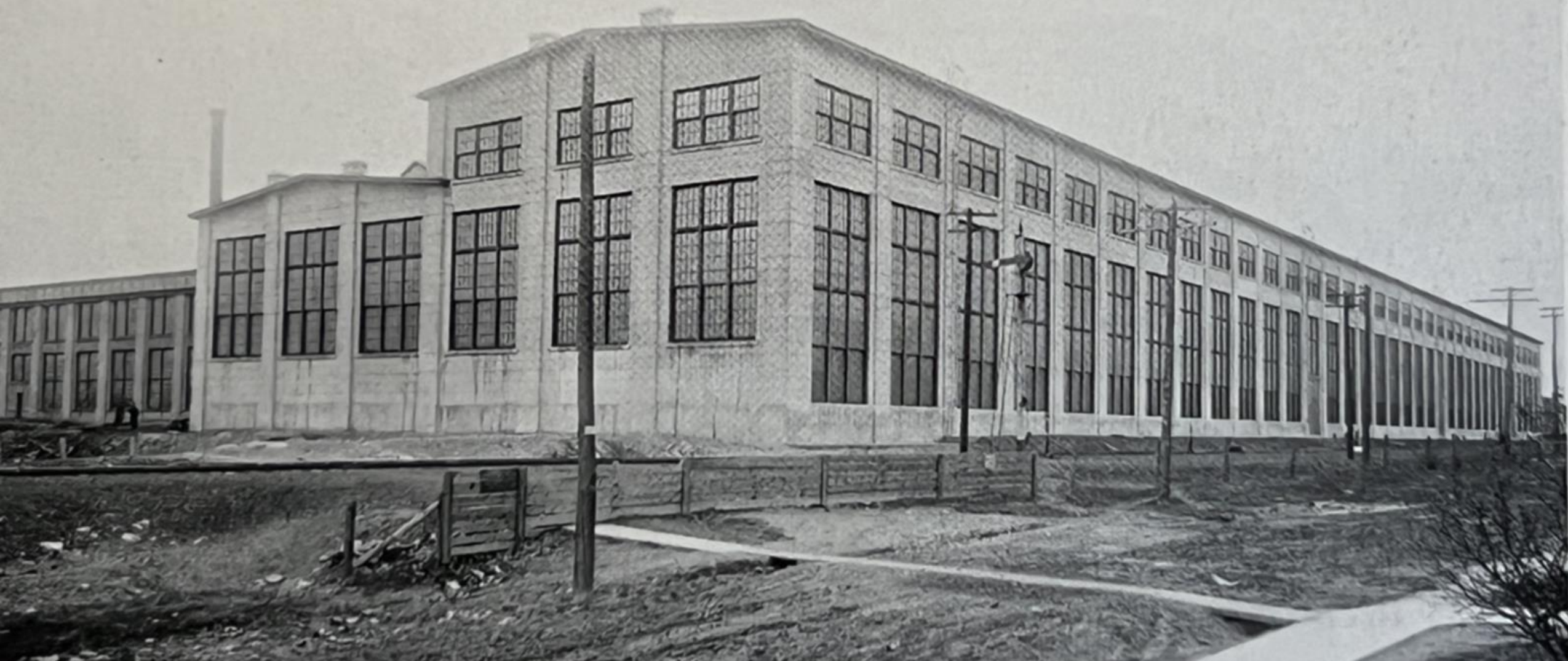
Tremco Supports Over 45 Different Scopes of Work

1. Insulating Concrete Forms
 2. lightweight Insulated Veneer
 3. Engineered Framing Systems
 4. Re-Roofing Preparation
 5. Building Weatherization
 6. Roofing Rehabilitation
 7. Bituminous Damp-proofing
 8. Built-Up Bituminous Waterproofing
 9. Sheet Waterproofing for Horizontal Waterproofing
 10. Hot Fluid Applied Waterproofing
 11. Cold Fluid Applied Waterproofing
 12. Cementitious and Reactive Waterproofing
 13. Bentonite Waterproofing
 14. Traffic Coatings
 15. Thermal Insulation for Below Grade, Under Slab, Exterior Wall
 16. Exterior Insulation and Finish Systems
 17. Polymer-Based Exterior Insulation and Finish Systems
 18. Exterior Insulation and Finish Systems with Moisture Drainage
 19. Exterior Insulation and Finish Systems with Adhered Masonry Veneer
 20. Direct Applied Finish Systems
 21. Weather Barriers
 22. Vapor Retarders
 23. Self-Adhered Butyl Sheet Air Barriers, Vapor Permeable
 24. Self-Adhered Butyl Sheet Air Barriers, Vapor Impermeable
 25. Factory Fluid-Applied Membrane Air Barriers
 26. Metal Roof and Wall Cladding
 27. Metal Composite Material Wall Panels
 28. Siding
 29. Built-Up Roofing
 30. Modified Bituminous Membrane Roofing
 31. Single Ply Roofing
 32. Fluid-Applied Roofing
 33. Sheet Metal Flashing and Trim
 34. Self-Adhering Sheet Flashing
 35. Sheet Metal and Specialties
 36. Vegetated Roofing
 37. Firestopping
 38. Preformed Joint Seals
 39. Joint Sealants
 40. Expansion Control
 41. Windows and Doors
 42. Storefront and Curtain Walls
 43. Glazing Sealants
 44. High Performance Coatings
 45. Fall Protection
- And more...

How do we go from This?



To Restoring the Legacy...



By Reimagining Timeless Legacy Built for Today





Why Panelized Construction?



Faster Construction Time



Stronger and More Resilient



Cost Effective



Any Look You Want



Impervious to Weather



Better Insulated



Leading Edge Sustainability



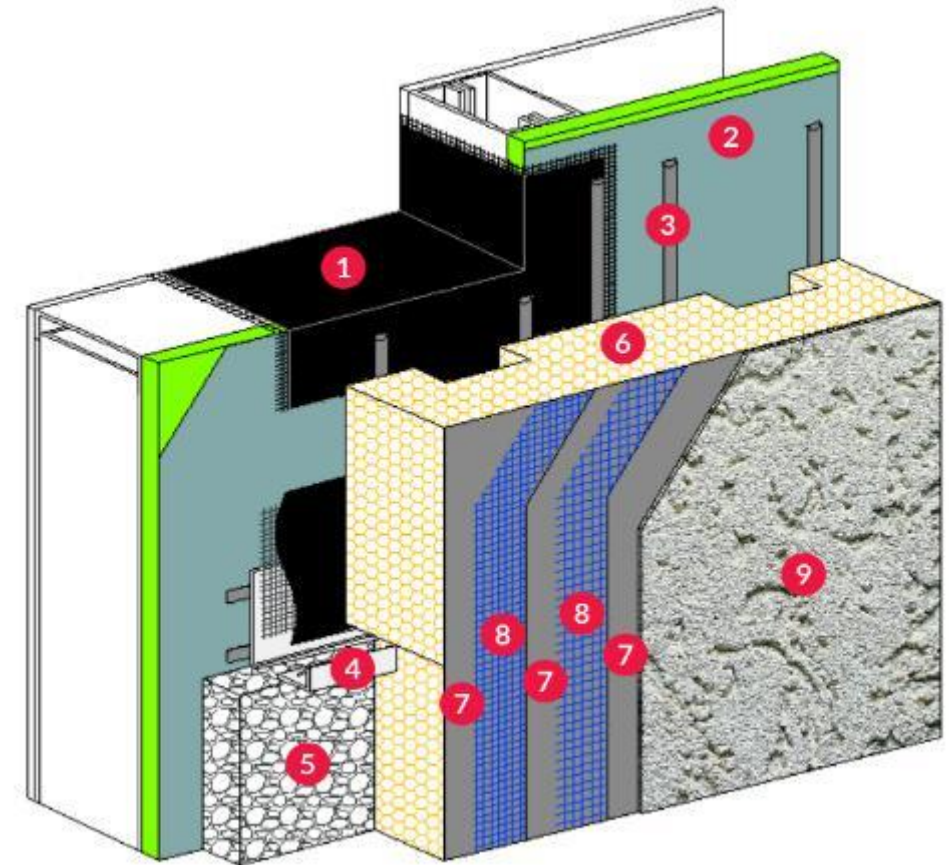
One Point of Contact

What is EIFS?

Exterior Insulation and Finish System

Pre-Applied Air Barrier with Continuous Insulation

1. Fluid applied/Peel and Stick flashing
2. Pre—applied air / water barrier on exterior sheathing
3. Adhesive / Drainage
4. Pre-based starter board
5. Vent Assembly *Optional
6. EPS Insulation
7. Base Coat
8. Reinforcing mesh
9. Finish



Realizing the Vision: East Elevation



Realizing the Vision: Sount and North Elevations



Realizing the Vision: West Elevation



The Tremco Solution...



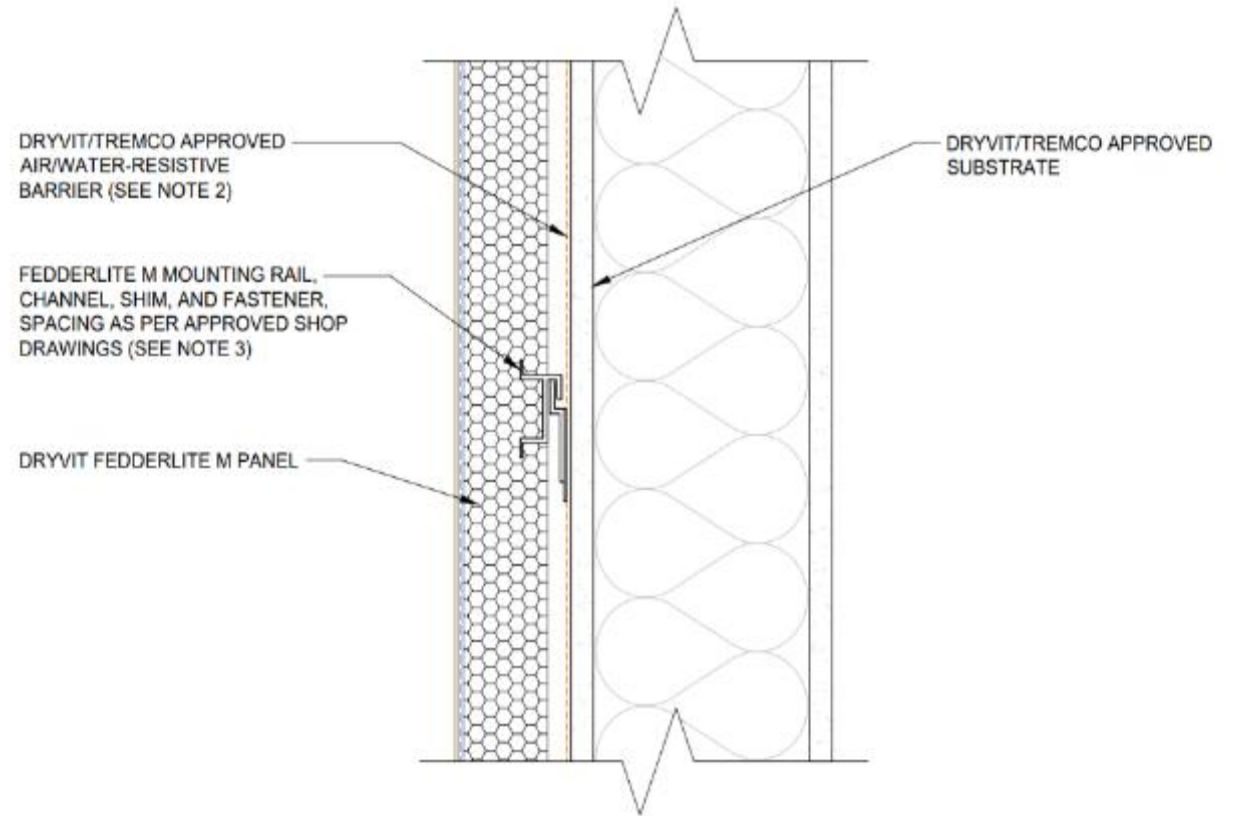
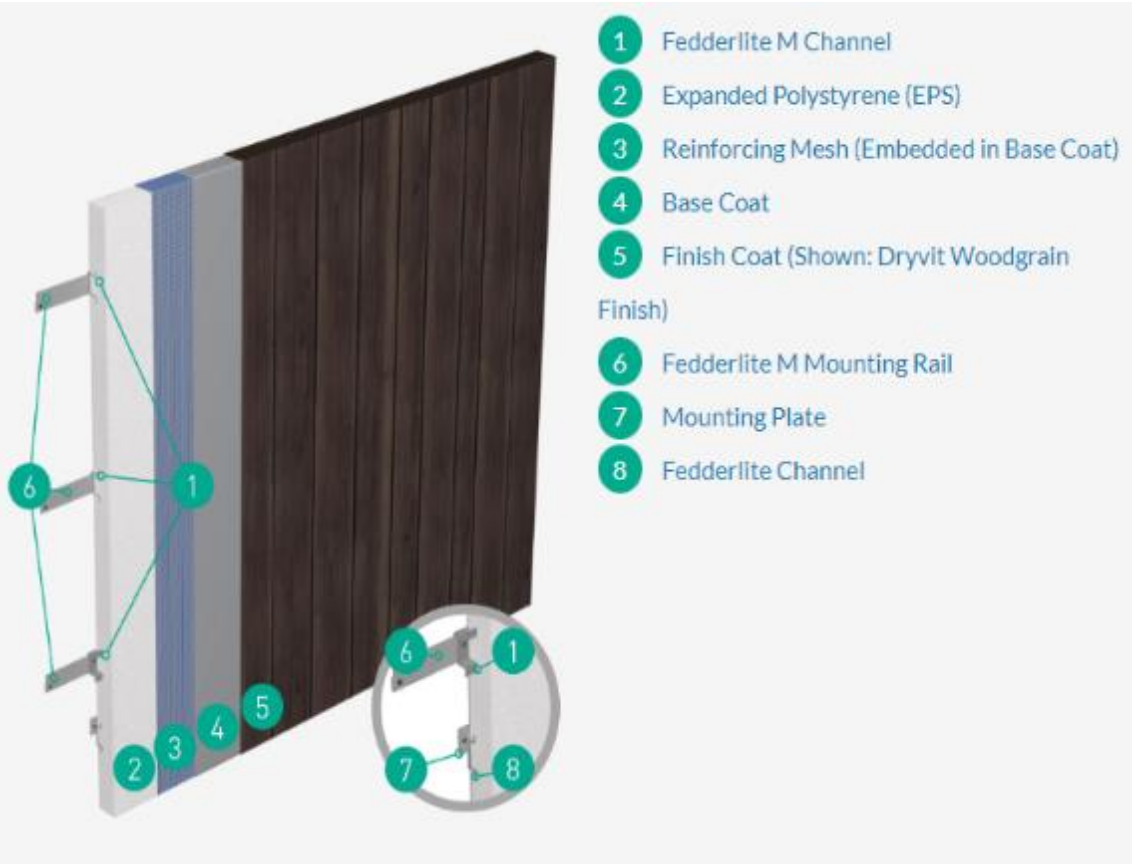
Fedderlite Panels

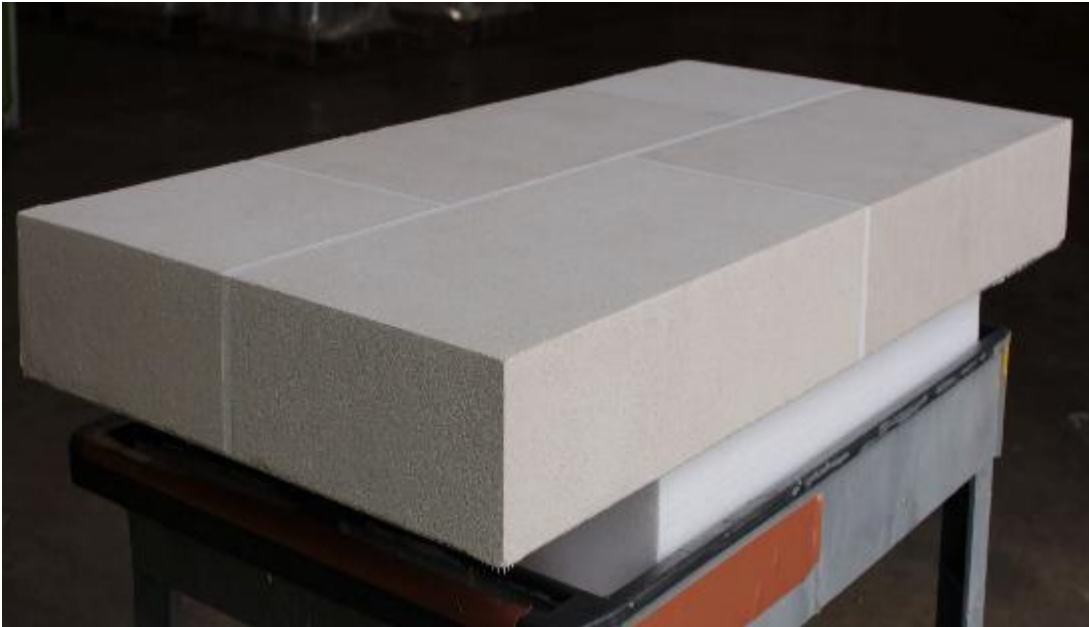


Construction Products Group

Fedderlite M

RR





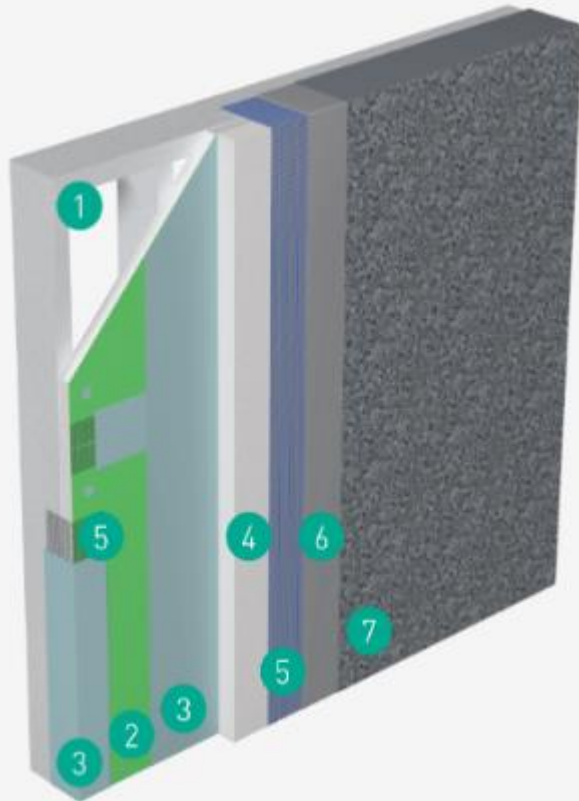
Realizing the Vision: The Addition



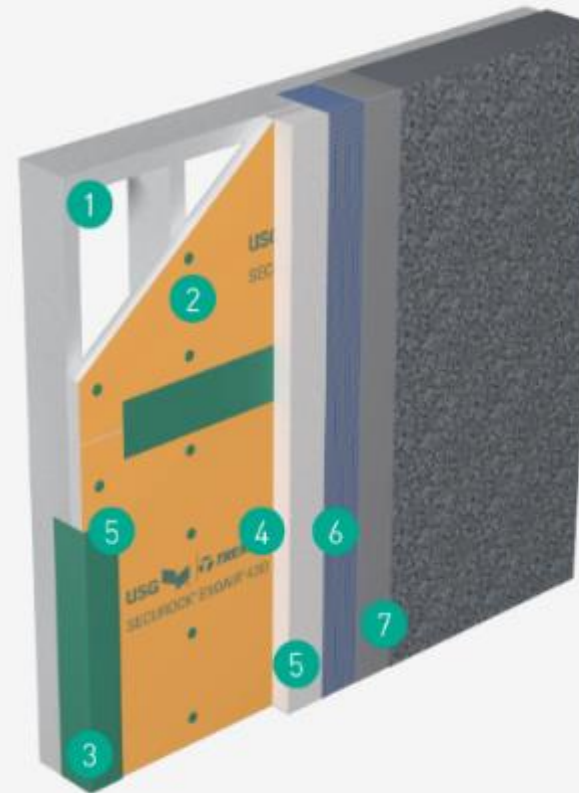
The Tremco Solution...



Outsulite Panels



- 1 Light-Gauge Steel Framing
- 2 Approved Sheathing
- 3 Backstop® Air/Water-Resistive Barrier /
Dymonic® 100 Detailing Sealant
- 4 Expanded Polystyrene (EPS) w/ Dryvit
Adhesive
- 5 Reinforcing Mesh (Embedded in Base Coat)
- 6 Base Coat
- 7 Finish Coat



- 1 Light-Gauge Steel Framing
- 2 Securock® ExoAir® 430 Air/Water-
Resistive Barrier
- 3 Dymonic® 100 Detailing Sealant
- 4 Expanded Polystyrene (EPS) w/Dryvit
Adhesive
- 5 Reinforcing Mesh (Embedded in Base Coat)
- 6 Base Coat
- 7 Finish Coat

Framing



Sheathing



EPS Insulation



Basecoat and Mesh



Finish!



Installation





The Power of One

One System. One Manufacturer. One Warranty.



NO FINGER-POINTING AMONG MANUFACTURERS

From the cladding, to the CI, to the air barrier, waterproofing, sealants, coatings and even window flashings and gaskets. All supported together by an industry leading comprehensive warranty.



SAFEGUARD YOUR LONG-TERM INVESTMENTS

Systems that offer extended warranty terms protect your investment for years to come. Maintenance and service plans can also find and fix issues before they cause real problems.



PEACE OF MIND

When your building is protected with a Tremco CPG building envelope, you don't have to worry. It adds value to your property, and it protects you and future owners for the entire warranty term*



OPTIONS FOR ANY BUDGET

With our *Good / Better / Best* building envelope systems and corresponding warranties, whatever your project goals, we have proven solutions that will protect your building effectively.

*Tremco CPG building envelope warranties are transferrable pending express written consent of the company.