



**Grand Trunk Railway
(GTR) Shops**

“THIS PROJECT IS TOO BIG FOR STRATFORD”



“We are not a City of 500,000 people.”
Stratford “Punches Above its Weight”

R. RITZ ARCHITECT INC.

“THIS PROJECT IS TOO BIG FOR STRATFORD”

RR

“We are not a City of 500,000 people.” Stratford “Punches Above its Weight”

Yes, we are not a city of 500,000 however, our history proves this project is **not** too big for Stratford!
Here is a short summary of how Stratford has, “Punched above its Weight”

A non geographically central county seat.

Being called a city before we had enough citizens to officially be called a city 1885.

Getting the GTR to show up here in 1870, the largest of the three CNR shops with the others located in Montreal the largest city in Canada at the time and the other Winnipeg the capital of a province.

That the greatest inventor of all time, at 16, Thomas Edison, in 1863, lived and worked here as a GTR telegraph operator and while he was here invented a mousetrap and an automatic signalling device during his short stay.

1908 Normal School – Teacher’s College one of four in the province with other in city's North Bay, Peterborough and Hamilton with Stratford being the only in its original condition.

In the first half of the twentieth century, Stratford was home to Canada's largest furniture industry. During the 1920s almost one-sixth of all the furniture made in Canada was made at Stratford.

In 1922 a cenotaph designed by the same artist, Walter Allward, that was commissioned for the Vimmy Ridge Memorial in France.



“THIS PROJECT IS TOO BIG FOR STRATFORD”

RR

“We are not a City of 500,000 people.” Stratford “Punches Above its Weight”

Howie Morenz worked at the GTR shops as an apprentice machinist and scored nine goals for Stratford in a CNR hockey tournament in Montreal and was signed by the Montreal Canadiens who retired his Number seven as he was the greatest hockey player in the first half of the 20th century.

Harry Murray Patterson, his dad and grand dad all worked at the GTR Shops, and his son Tom Patterson in 1953 founded the nation’s largest repertory theatre, the Stratford Festival.

The largest ball bearing manufacturer in Germany, FAG Bearings (Schaeffler), establish its first North American manufacturing plant in Stratford, Ontario in 1953.

Danish toy maker Lego choose Stratford in 1961 to produce Lego for sales in North America with the only other North American plant located in Denver, the capital and most populous city of Colorado.

Birthplace of former CTV National News anchor, Lloyd Roberston

Birthplace of two-time Grammy winning pop star Justin Bieber

Not a city of 500,000, however, **Stratford “Punches Above its Weight”** by performing, succeeding, or exerting influence beyond what I expected based on one's size, resources, or ability.

In recognition of our 2032 Bicentennial, we can develop the GTR Shops into a Community Complex!



💡 “THIS PROJECT IS TOO BIG FOR STRATFORD”

RR

**“We are not a City of 500,000 people.” Stratford “Punches Above its Weight”
with the GTR Shops**

Northwest 1919
aerial view of
the GTR



 **“THIS PROJECT IS TOO BIG FOR STRATFORD”**

RR

“We are not a City of 500,000 people.” Stratford “Punches Above its Weight” in Furniture with the Kroehler Mfg. Co. Ltd.

Southwest view of
Kroehler Mfg. Co. Ltd.
with Locomotive



💡 “THIS PROJECT IS TOO BIG FOR STRATFORD”

RR

“We are not a City of 500,000 people.” Stratford “Punches Above its Weight” with Schaeffler Canada

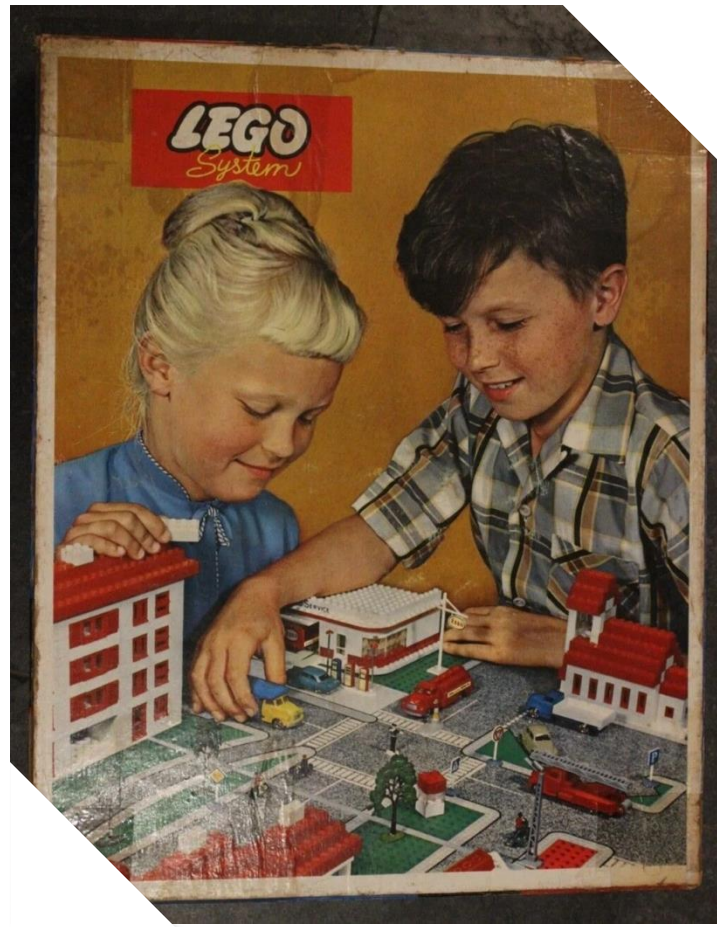
Southeast
aerial view of
Schaeffler Bearings



“THIS PROJECT IS TOO BIG FOR STRATFORD”

RR

“We are not a City of 500,000 people.” Stratford “Punches Above its Weight” with Lego made at Samsonite.



 **“THIS PROJECT IS TOO BIG FOR STRATFORD”**

RR

“We are not a City of 500,000 people.” Stratford “Punches Above its Weight” with one of four Normal Schools.



 **“THIS PROJECT IS TOO BIG FOR STRATFORD”**

RR

“We are not a City of 500,000 people.” Stratford “Punches Above its Weight” with **Grand Trunk Railway Locomotive Repair Shops.**

South aerial view
of the GTR



💡 “THIS PROJECT IS TOO BIG FOR STRATFORD”

RR

“We are not a City of 500,000 people.” Stratford “Punches Above its Weight” with citizens like Tom Patterson.

James Mason,
Tom Patterson
and Tyrone Guthrie



 **“THIS PROJECT IS TOO BIG FOR STRATFORD”**

RR

“We are not a City of 500,000 people.” Stratford “Punches Above its Weight” with people who worked here like Thomas Edison.



 **“THIS PROJECT IS TOO BIG FOR STRATFORD”**

RR

“We are not a City of 500,000 people.” Stratford “Punches Above its Weight” with a cenotaph by the artist of Vimy Ridge.



 **“THIS PROJECT IS TOO BIG FOR STRATFORD”**

RR

“We are not a City of 500,000 people.” Stratford “Punches Above its Weight” with the Stratford Festival.



 **“THIS PROJECT IS TOO BIG FOR STRATFORD”**

RR

“We are not a City of 500,000 people.” Stratford “Punches Above its Weight” with **hockey legends.**

Stratford 1952 Senior
A line of Flick, Roth
and Flanagan

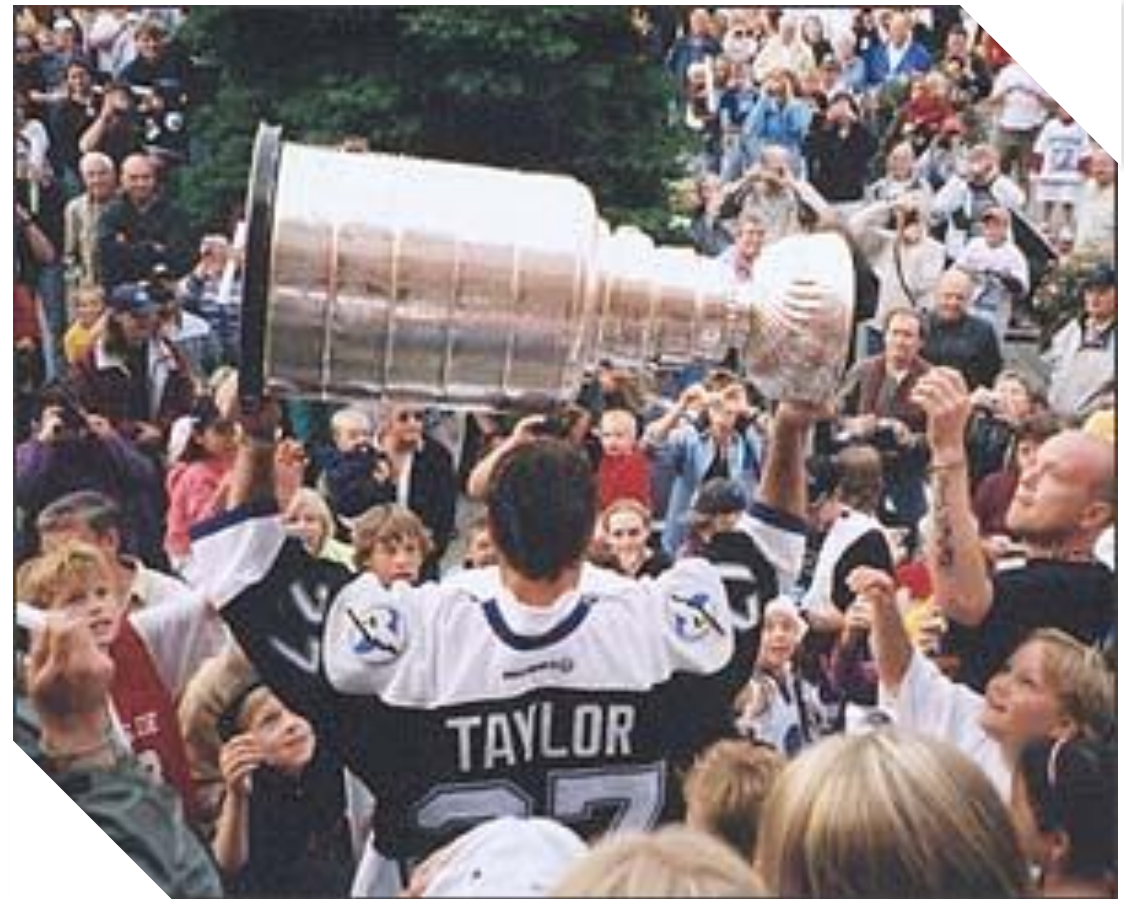


💡 “THIS PROJECT IS TOO BIG FOR STRATFORD”

RR

“We are not a City of 500,000 people.” Stratford “Punches Above its Weight” with Stanley Cup Champions.

Two-time Stanley Cup
Champion Stratford’s
Tim Taylor



💡 **“THIS PROJECT IS TOO BIG FOR STRATFORD”**

RR

“We are not a City of 500,000 people.” Stratford “Punches Above its Weight” with hockey legends.

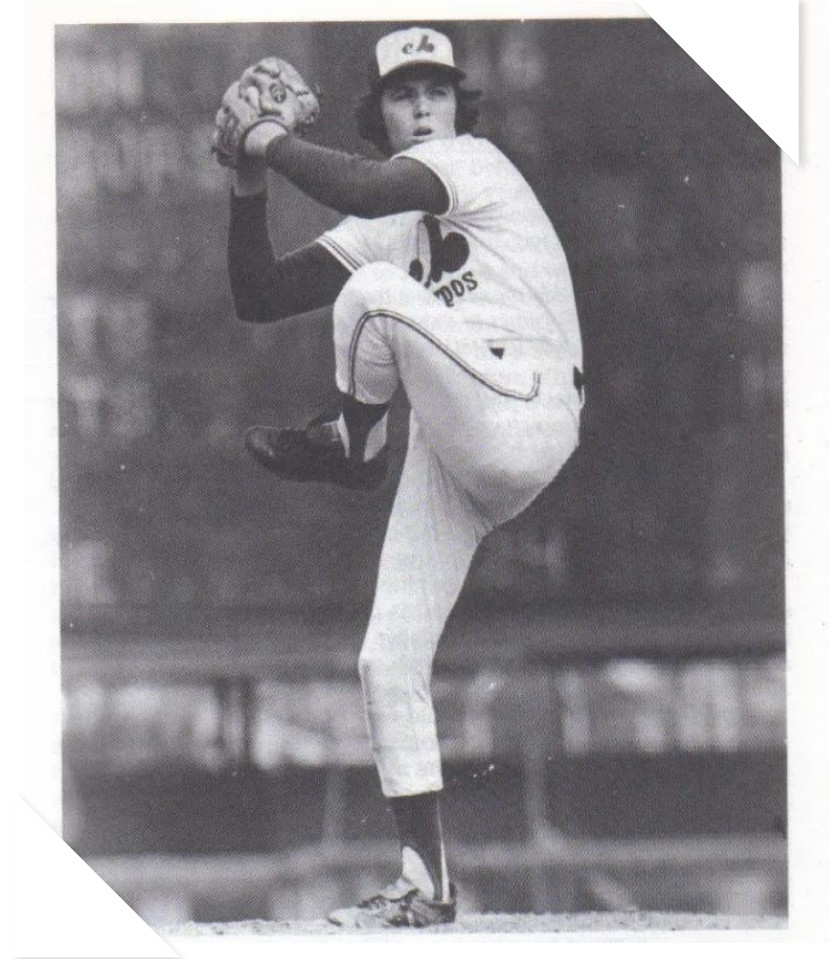
Howie Morenz, the best hockey player of the first half of the 20th century



 **“THIS PROJECT IS TOO BIG FOR STRATFORD”**

RR

“We are not a City of 500,000 people.” Stratford “Punches Above its Weight” with Larry Landreth pitching in the Majors.



💡 “THIS PROJECT IS TOO BIG FOR STRATFORD”

RR

“We are not a City of 500,000 people.” Stratford “Punches Above its Weight” with famous news anchors.

Lloyd Robertson,
Canada’s most
famous news anchor.



 **“THIS PROJECT IS TOO BIG FOR STRATFORD”**

RR

**“We are not a City of 500,000 people.” Stratford “Punches Above its Weight”
a history with **Floodtides of Fortune.****



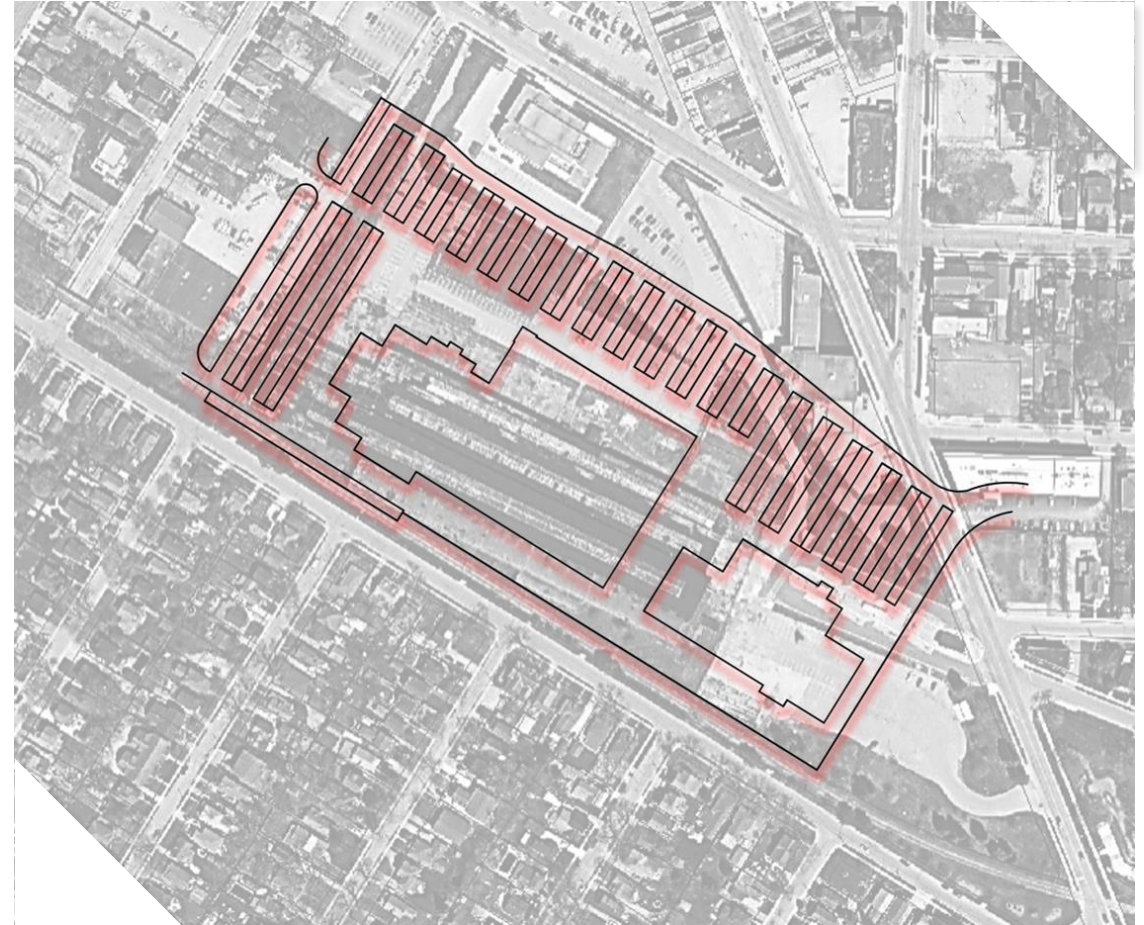
💡 “THIS PROJECT IS TOO BIG FOR STRATFORD”

RR

“We are not a City of 500,000 people.” Stratford “Punches Above its Weight”

We did it before!

The GTR Shops has a similar site area and building size as illustrated in this image where it is superimposed over the Stratford Rotary Recreational Complex.



💡 **“THIS PROJECT IS TOO BIG FOR STRATFORD”**

RR

“We are not a City of 500,000 people.” Stratford “Punches Above its Weight”

Let’s make the
GTR Shops
**Stratford’s 2032
Bicentennial
Project**

Starts in 2027
and is finished
by 2032.

