



**Grand Trunk Railway
(GTR) Shops**

COLLABORATE



Do Not Think in Silos

R. RITZ ARCHITECT INC.

COLLABORATE: DO NOT THINK IN SILOS

RR

Where individuals, teams, or departments work in isolation, withholding information and refusing to cooperate with other parts of an organization.

Use this Site to Accommodate Civic Needs

Through the **Master Plan**, developed with extensive public engagement and, the **Ad-hoc Committee**, most Civic needs were identified including:

New Community Hub - A centralized, public space that brings together diverse services, agencies, and groups under one roof to foster social connection, health, education, and recreation.

New Pool and Change Rooms at the YMCA with a New and Larger Daycare

New Community Event Space

New Larger Library

New Community Theatre

Bring CNR Locomotive 6218 back to Stratford

More recently a New Police Headquarters.

All these Facilities as separate buildings will cost money to build however, other than the Police Headquarters, they **would all function best if they were in the same building** with shared spaces and costs.



COLLABORATE: DO NOT THINK IN SILOS

RR

These organizations are willing to **collaborate** with an interest in sharing space as tenants in the GTR Building



It is in the City's best interest to join and encourage such collaboration and partnership.

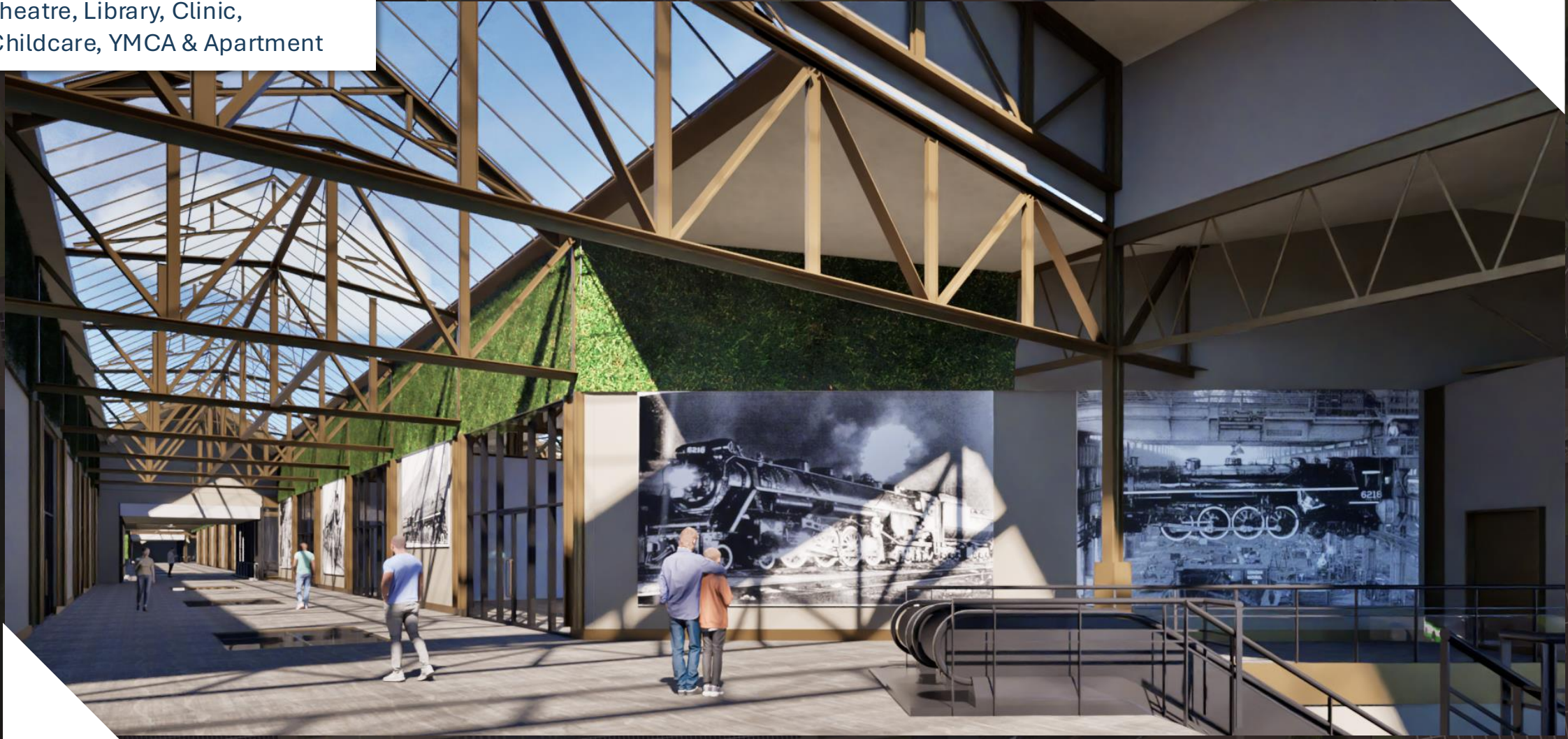
Daytime view of the McKenzie Street entrance.



McKenzie Street Interior Access
to 6218, Community Event Space
and Theatre



Concourse to Community Space,
Theatre, Library, Clinic,
Childcare, YMCA & Apartment



Argyle Pedestrian Path – Library
Entrance – North View



Library Interior – Southwest View
of Mezzanine



Library Interior – Southeast View
from Mezzanine



Stratford Street North Access – Aquatic Centre Entrance



Childcare and Aquatic Entrance – East View
of Pool and Apartment



Northwest View of Apartment and Pool



Southwest View of Gym, Fitness, Pool and Apartment



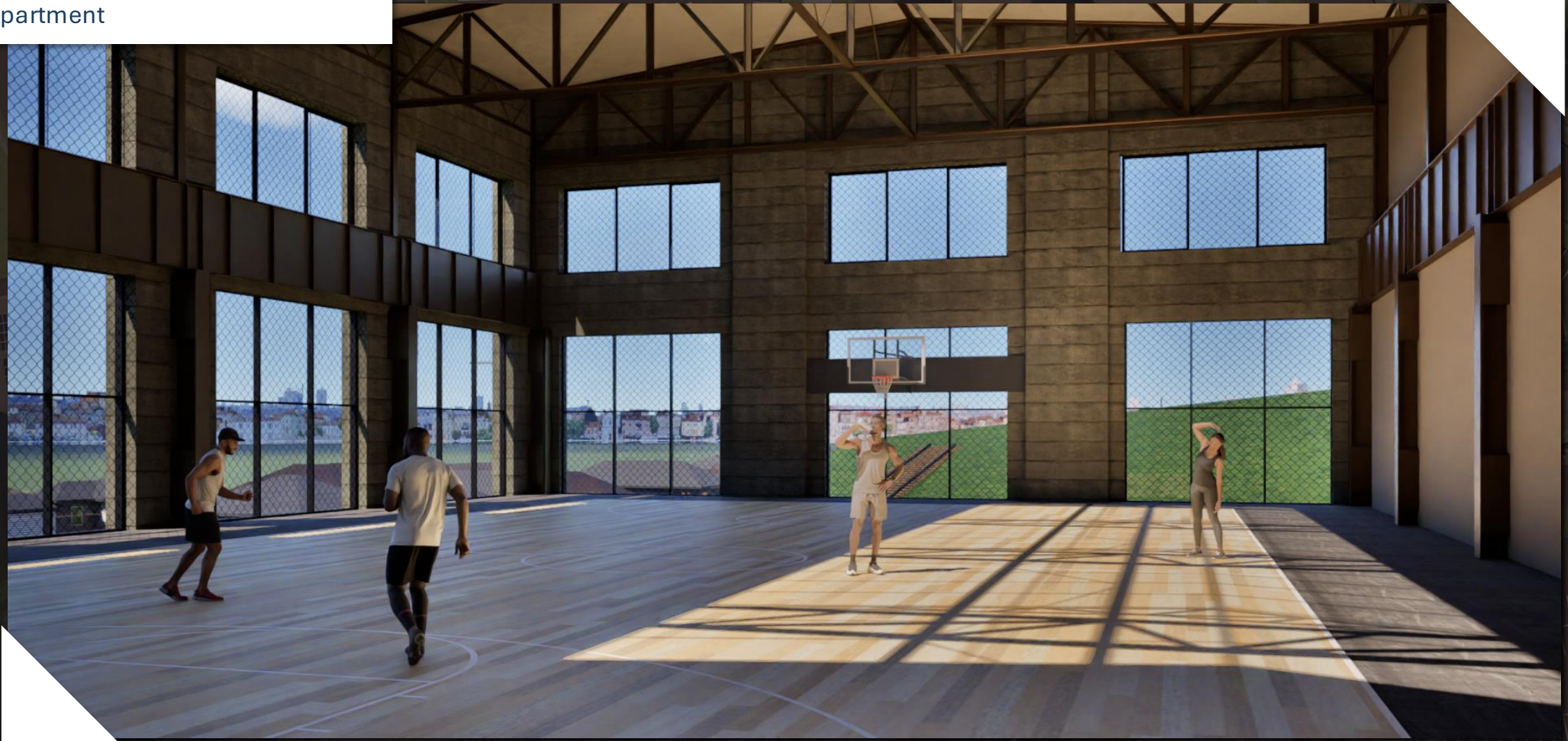
Stratford Street – View of South Access



Stratford Street – East View of YMCA and Aquatic Centre Entrance



Gym – Southwest View of Pool and Apartment



Fitness with South View of Pool



Pool Interior with Splash Pad, Activity and Learn to Swim



Pool Interior of 25m Olympic Pool

